

Madison, Wisconsin

# CITY OF MADISON

## CITY ENGINEERING DIVISION

### DEPARTMENT OF PUBLIC WORKS

# PLAN OF PROPOSED IMPROVEMENT

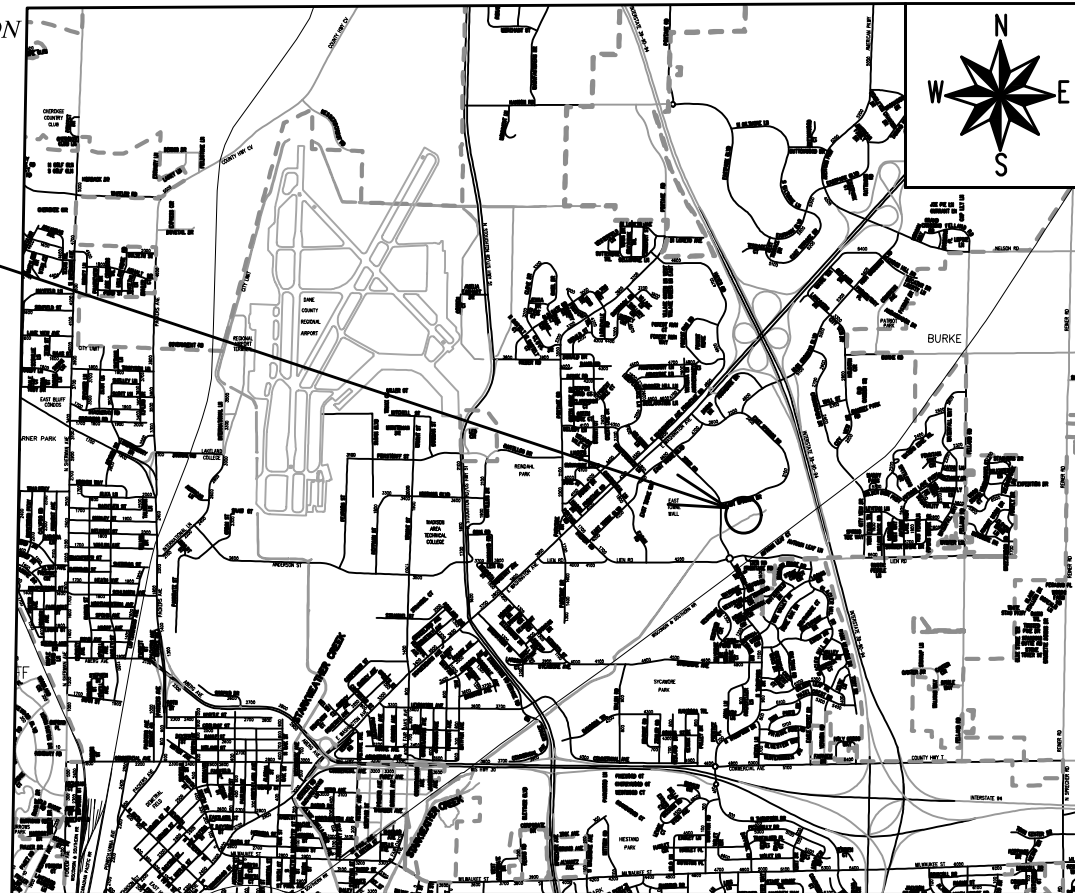
## EAST TOWNE DETENTION BASIN IMPROVEMENTS

#### INDEX OF SHEETS

SHEET NO. 1	COVER SHEET
SHEET NO. EX1	EXISTING CONDITIONS
SHEET NO. S1	OVERALL SITE LAYOUT
SHEET NO. CP1	CLEARING PLAN
SHEET NO. GP1	GRADING & EROSION CONTROL PLAN-NE DETENTION AREA
SHEET NO. GP2	GRADING & EROSION CONTROL PLAN - NW WET STORAGE AREA
SHEET NO. U1	UTILITY PLAN
SHEET NO. U2	STORMSEWER SCHEDULE
SHEET NO. VP1	VEGETATION PLAN
SHEET NO. D1	NE DET -FLOATABLE REMOVAL DETAIL
SHEET NO. D2	NW WET STORAGE-FLOATABLE REMOVAL DETAIL
SHEET NO. D3	NE DETENTION/NW WET STORAGE CROSS SECTION
SHEET NO. P1	NE DET MAINTENANCE ACCESS ROAD P&P
SHEET NO. P2	NW MAINTENANCE ACCESS ROAD P&P

CITY PROJECT NO. 11066  
CONTRACT NO. 9437

PROJECT  
LOCATION



PUBLIC IMPROVEMENT PROJECT  
APPROVED

APPROVED DATE  
SEPTEMBER 25, 2022

BY THE COMMON COUNCIL  
OF MADISON, WISCONSIN

PUBLIC IMPROVEMENT DESIGN  
APPROVED BY:

*Greg Friss*

Jan 12, 2023

City Engineer

Date

STORM SEWER  
DESIGNED BY:



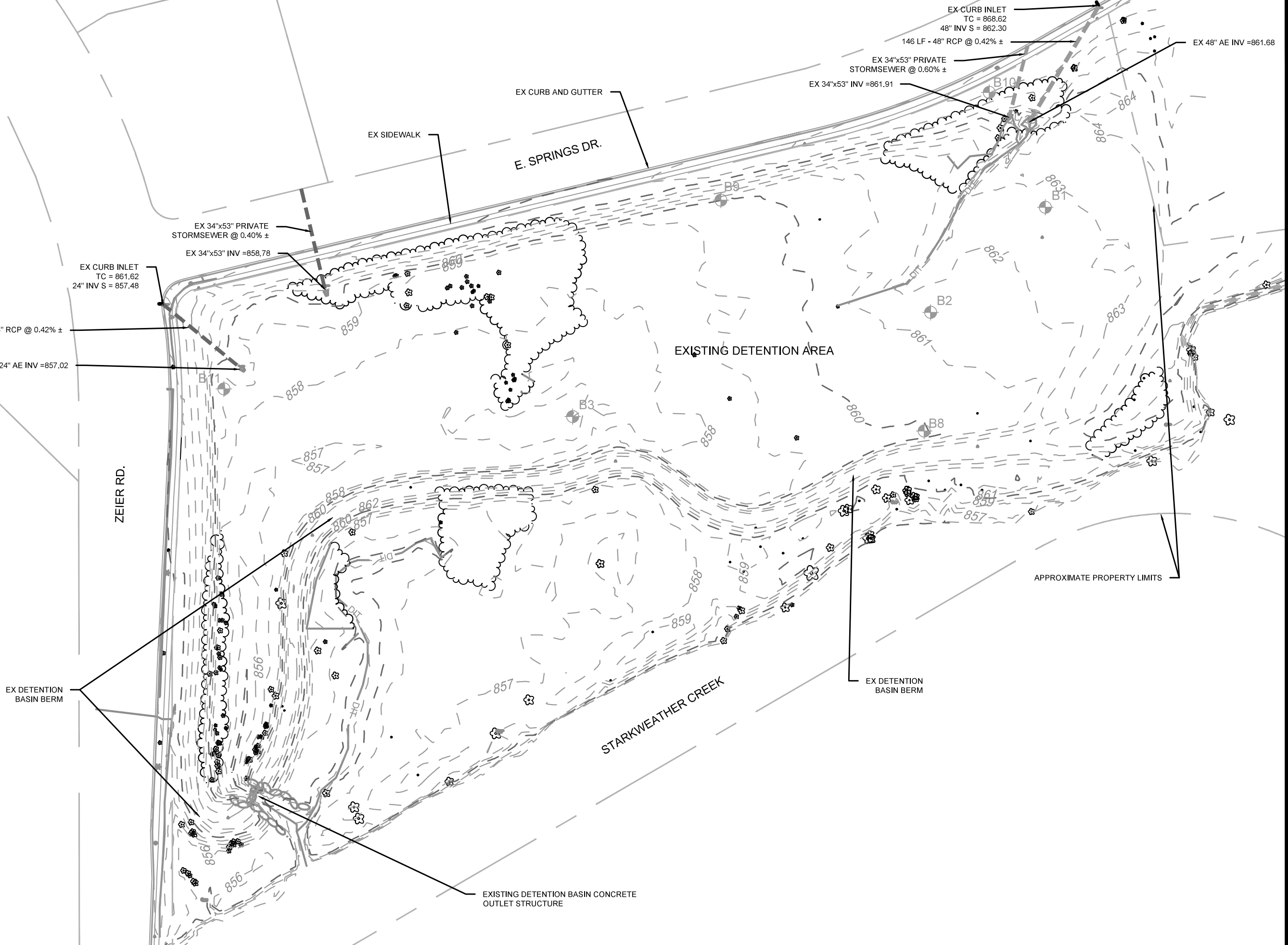
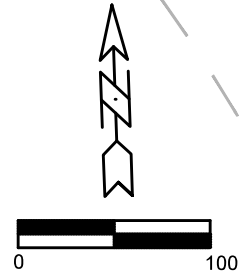
Jan 11, 2023

PLOT SCALE: 1:1\_XREF

PLOT NAME: ---

REV. DATE: 1/11/2023 1:50 PM

ORIGINATOR: CITY\_OF\_MADISON



MARK	REVISION	DATE	BY

Designed By: GVP  
 Date: 1/11/2023 2:19 PM  
 Scale: 1"=100'  
 11066  
 EX1

11066  
 EAST TOWNE DETENTION BASIN IMPROVEMENTS  
 1801 ZEIER RD, MADISON, WI  
 CONTRACT NO: 9437  
 M:\DESIGN\Projects\11066\CAD\Sewers\11066 East Towne Pond Ex Conditions.dwg



11066  
 EX 1

**GENERAL NOTES:**

1. ALL SITE WORK AND MATERIALS SHALL BE PER THE CITY OF MADISON STANDARD SPECIFICATIONS
2. EROSION CONTROL MEASURES SHALL BE PLACED PER THE APPROVED EROSION CONTROL PLAN
3. LENGTHS OF STORM SEWER INCLUDE ENDWALLS
4. STORM SEWER LENGTHS SHALL BE FIELD VERIFIED DURING CONSTRUCTION TO ENSURE THAT THEY ARE LONG ENOUGH TO CONFORM TO THE TYPICAL SECTION
5. ALL DISTURBED AREAS SHALL RECEIVE A MINIMUM OF 6" OF TOPSOIL, SEED AND MULCH. SEED MIXTURE SHALL BE PER THE CITY OF MADISON REQUIREMENTS.

6. ANY ERRORS, DISCREPANCIES OR DIMENSIONS WITH THE PLAN SHALL BE BROUGHT TO THE ATTENTION OF THE ENGINEER PRIOR TO CONSTRUCTION.
7. CONTRACTOR IS RESPONSIBLE TO OBTAIN ANY AND ALL GROUNDWATER/SITE DEWATERING PERMITS REQUIRED. INCIDENTAL TO BID ITEM 90007
8. CONTRACTOR SHALL REPLACE ALL SIDEWALK AND CURB & GUTTER WHICH ABUTS THE PROPERTY AND IS DAMAGED BY CONSTRUCTION. ANY ADDITIONAL AREAS NOT CALLED OUT ON PLAN INCIDENTAL TO BID ITEM 20101
9. ALL DAMAGED TO PAVEMENT OF ADJACENT PUBLIC STREETS SHALL BE RESTORED IN ACCORDANCE WITH THE CITY OF MADISON'S PAVEMENT PATCHING CRITERIA. INCIDENTAL TO BID ITEM 20101

SAWCUT TO NEAREST JOINT AND REPLACE ANY SIDEWALK REQUIRED TO BE REMOVED FOR CATCH BASIN CONSTRUCTION

(8) - 24" OUTLET CULVERTS SPACED TO SPREAD FLOW WITH APRON ENDWALLS AND 6'X6' RIPRAP PADS & HR FILTER FABRIC PER S.D.D. 5.4.4. SEE UTILITY PLAN (U-1) FOR STORMSEWER DESIGN (TYP.)

10' FUTURE PATH

E. SPRINGS DR.

70 LF WEIR AT 862.35 PLACE HEAVY DUTY RIPRAP W/ HR FILTER FABRIC ON WEIR AND DOWNSTREAM BANK (70' X 41')

EXISTING STORM SEWER DRAINING INTO DETENTION BASIN

AFTER RESTORATION SAWCUT, REMOVE AND REPLACE ANY CURB & GUTTER DAMAGED FROM CONSTRUCTION

AFTER RESTORATION SAWCUT TO NEAREST JOINT AND REPLACE ANY SIDEWALK DAMAGED FROM CONSTRUCTION

POST CONSTRUCTION MAINTENANCE ROAD (SEE DETAIL BELOW)

EXISTING STORM SEWER DRAINING INTO DETENTION BASIN

SAWCUT TO NEAREST JOINT AND REPLACE ANY SIDEWALK REQUIRED TO BE REMOVED FOR CATCH BASIN CONSTRUCTION

SEE UTILITY PLAN (U-1) FOR PROPOSED STORMSEWER DESIGN & EXISTING STORMSEWER REMOVALS (TYP.)

LIMITS OF DISTURBANCE

ZEIER ROAD

EXISTING DETENTION BASIN OUTLET STRUCTURE TO REMAIN

STARKWEATHER CREEK

PROPOSED WET DETENTION BASIN

TOP OF POND BERM - 863.50, TOP OF WET POND/OUTLET - 860.00, BOTTOM OF WET POND - 854.00

AFTER RESTORATION SAWCUT, REMOVE AND REPLACE ANY CURB & GUTTER DAMAGED FROM CONSTRUCTION

AFTER RESTORATION SAWCUT TO NEAREST JOINT AND REPLACE ANY SIDEWALK DAMAGED FROM CONSTRUCTION

EXISTING STORM SEWER DRAINING INTO DETENTION BASIN

POST CONSTRUCTION MAINTENANCE ROAD (SEE DETAIL BELOW)

10' FUTURE PATH

AFTER RESTORATION SAWCUT, REMOVE AND REPLACE ANY CURB & GUTTER DAMAGED FROM CONSTRUCTION

AFTER RESTORATION SAWCUT TO NEAREST JOINT AND REPLACE ANY SIDEWALK DAMAGED FROM CONSTRUCTION

SEE UTILITY PLAN (U-1) FOR PROPOSED STORMSEWER DESIGN & EXISTING STORMSEWER REMOVALS (TYP.)

WET FORBAY AREA

WET STORAGE AREA

BASIN STORAGE AREA

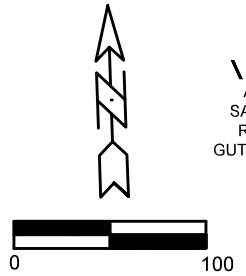
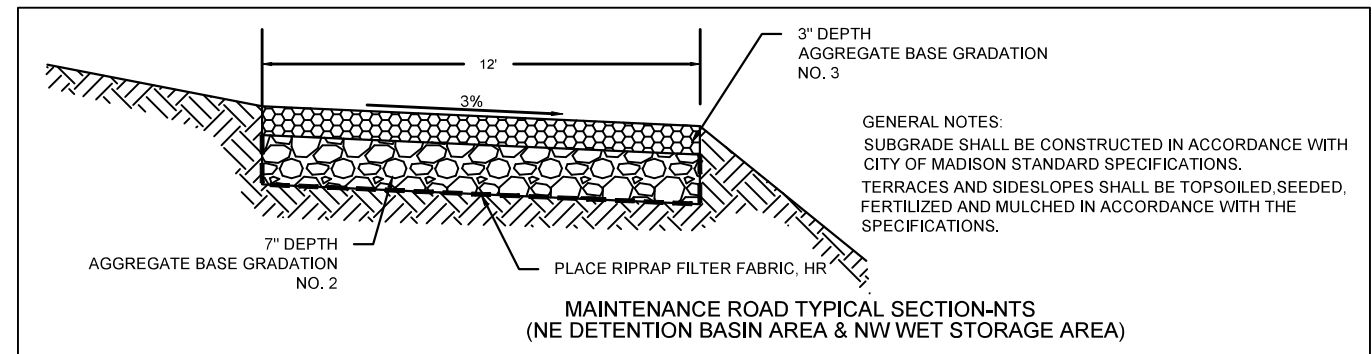
EXISTING DETENTION BASIN

NO GRADING, CONSTRUCTION TRAFFIC OR STORAGE IN AREA BEHIND CONSTRUCTION FENCE. PROTECT EXISTING VEGETATION BEHIND ORANGE CONSTRUCTION FENCE DURING CONSTRUCTION.

PLACE ORANGE CONSTRUCTION FENCE PRIOR TO CONSTRUCTION ACTIVITIES

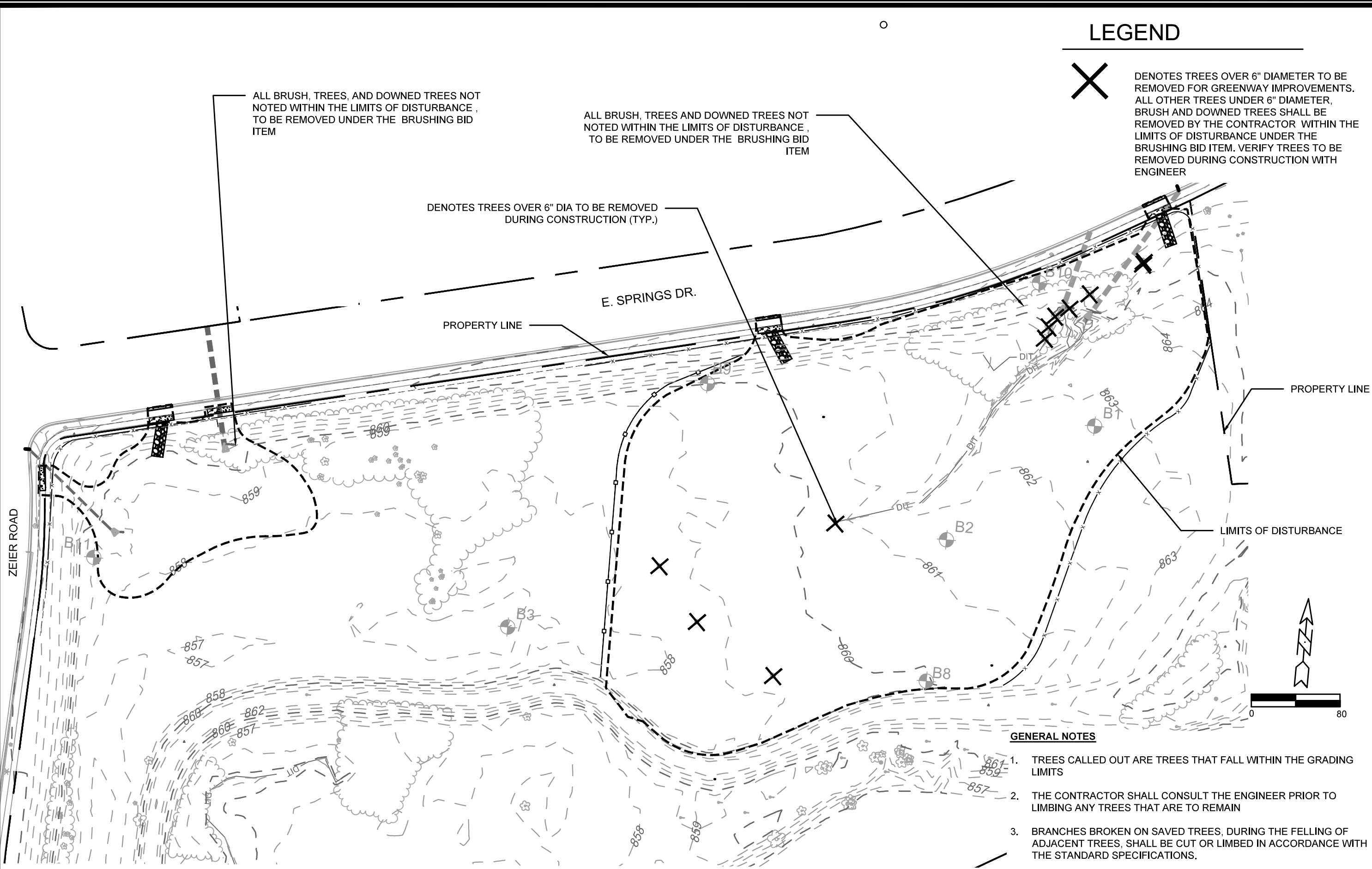
EXISTING BERM

LIMITS OF DISTURBANCE



11066	1801 ZEIER RD, MADISON, WI	9437
OVERALL SITE LAYOUT	EAST TOWNE DETENTION BASIN IMPROVEMENTS	CONTRACT NO:
11066	S1	

MARK: \_\_\_\_\_ REVISION: \_\_\_\_\_ DATE: 1/11/2023 2:19 PM  
 Designed By: GVP Scale: 1" = 100'  
 M:\DESIGN\Projects\11066\CAD\Sewers\11066 East Towne Detention Basin.dwg



### LEGEND


**X** DENOTES TREES OVER 6" DIAMETER TO BE REMOVED FOR GREENWAY IMPROVEMENTS. ALL OTHER TREES UNDER 6" DIAMETER, BRUSH AND DOWNED TREES SHALL BE REMOVED BY THE CONTRACTOR WITHIN THE LIMITS OF DISTURBANCE UNDER THE BRUSHING BID ITEM. VERIFY TREES TO BE REMOVED DURING CONSTRUCTION WITH ENGINEER

- #### GENERAL NOTES
1. TREES CALLED OUT ARE TREES THAT FALL WITHIN THE GRADING LIMITS
  2. THE CONTRACTOR SHALL CONSULT THE ENGINEER PRIOR TO LIMBING ANY TREES THAT ARE TO REMAIN
  3. BRANCHES BROKEN ON SAVED TREES, DURING THE FELLING OF ADJACENT TREES, SHALL BE CUT OR LIMBED IN ACCORDANCE WITH THE STANDARD SPECIFICATIONS.
  4. STUMPS WITHIN THE GRADING LIMITS SHALL BE GRUBBED OR PULLED TO MEET FINAL GRADE.

MARK	REVISION	DATE	BY	
Designed By: GVP	Date: 1/11/2023 2:19 PM			
11066				CPI

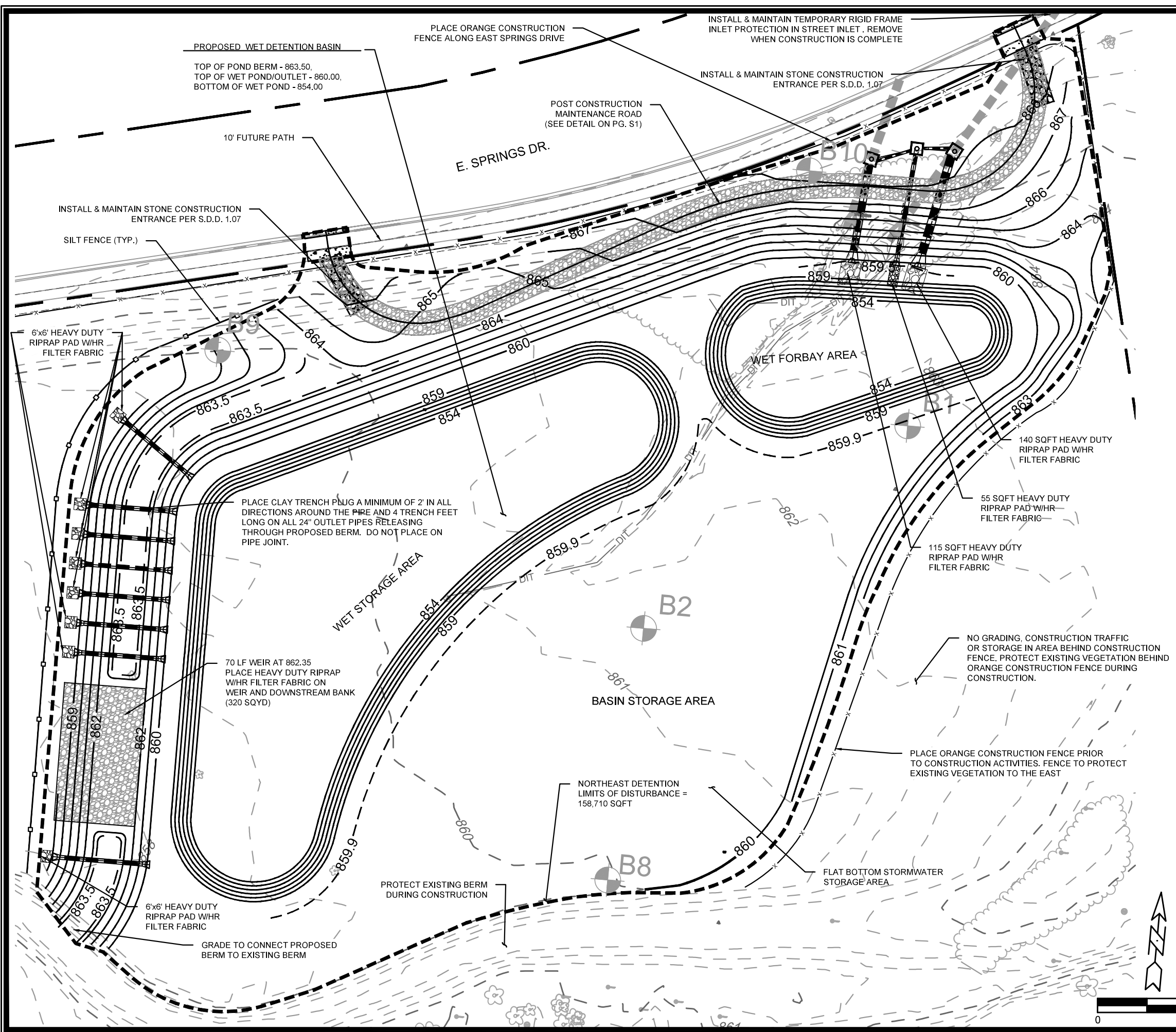
  

11066	1801 ZEIER RD, MADISON, WI
CLEARING PLAN	CONTRACT NO: 9437
M:\DESIGN\Projects\11066\CAD\Sewers\11066 East Town Detention Basin.dwg	



**11066**  
CPI





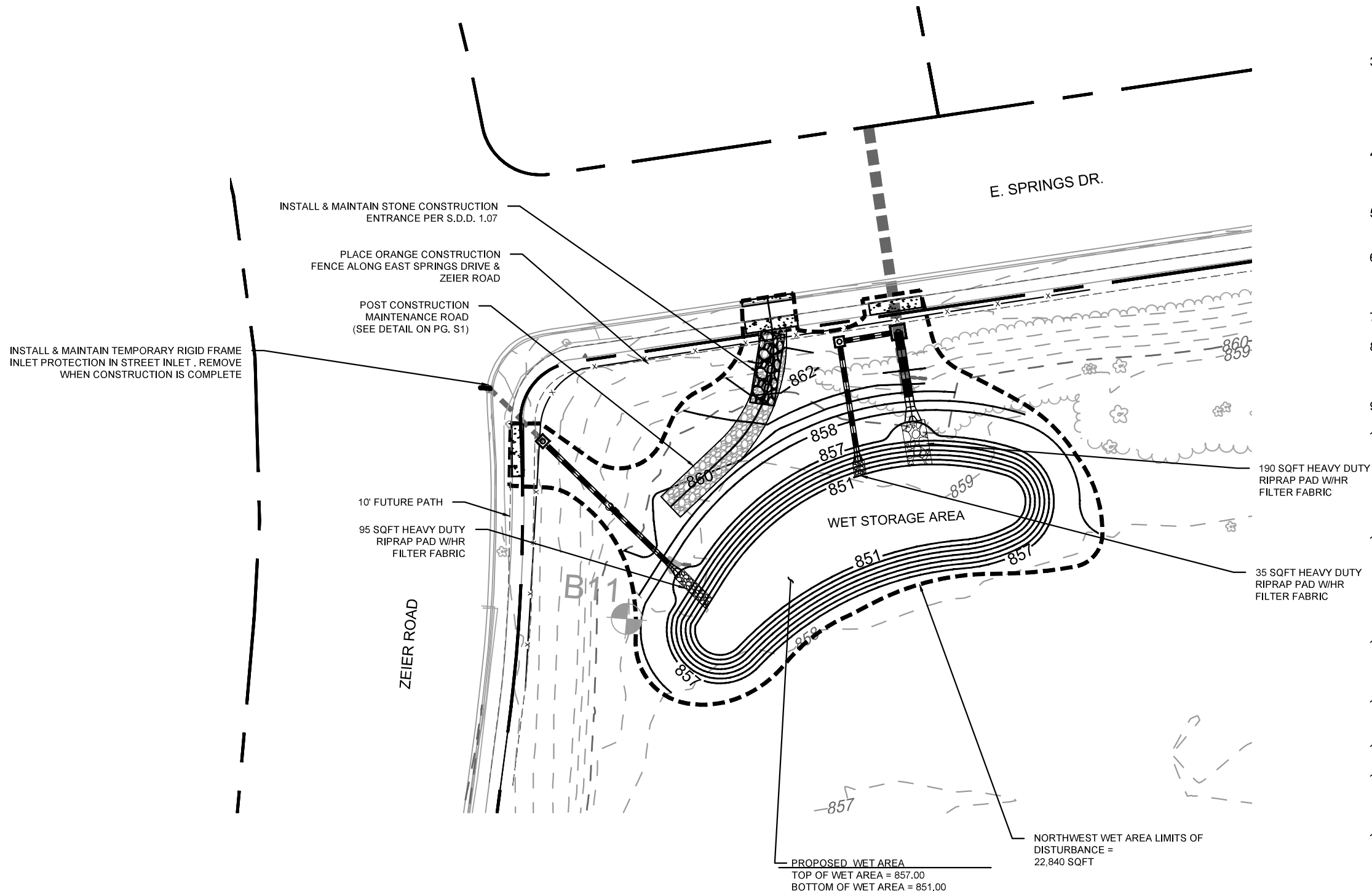
**EROSION CONTROL NOTES:**

1. ALL EROSION CONTROL MEASURES SHALL BE CONSTRUCTED AND MAINTAINED BY THE CONTRACTOR IN ACCORDANCE WITH THE WISCONSIN DNR TECHNICAL STANDARDS AND CITY OF MADISON STANDARD SPECIFICATIONS.
2. INSTALL EROSION CONTROL MEASURES PRIOR TO ANY SITE WORK. MODIFICATIONS TO SEDIMENT CONTROL DESIGN MAY BE CONDUCTED TO MEET UNFORESEEN FIELD CONDITIONS. THE CONTRACTOR SHALL PLACE SILT SOCK OR SILT FENCE AT THE DIRECTION OF THE CONSTRUCTION ENGINEER.
3. EROSION CONTROL MEASURES INDICATED ON THE PLANS SHALL BE CONSIDERED MINIMUMS. IF DETERMINED NECESSARY DURING CONSTRUCTION ADDITIONAL MEASURES SHALL BE INSTALLED TO PREVENT SEDIMENT FROM LEAVING THE SITE.
4. INSPECT EROSION CONTROL MEASURES AFTER EACH 1/2" OR GREATER RAINFALL. REPAIR ANY DAMAGE OBSERVED DURING CONSTRUCTION.
5. CONTRACTOR SHALL REMOVE ALL EROSION CONTROL PRACTICES WHEN THE SITE IS RESTORED.
6. THE CONTRACTOR IS RESPONSIBLE FOR THE CONSTRUCTION AND MAINTENANCE OF ALL EROSION CONTROL MEASURES UNTIL FINAL ACCEPTANCE BY THE CITY OF MADISON
7. NO SITE GRADING OUTSIDE OF THE LIMITS OF DISTURBANCE
8. INSTALL INLET PROTECTION IN ALL STORM SEWER INLETS AND CATCH BASINS THAT MAY RECEIVE RUNOFF FROM DISTURBED AREAS
9. CUT AND FILL SLOPES SHALL BE NO GREATER THAN 3:1
10. ALL DISTURBED AREAS WITH A SLOPE OF 4:1 OR GREATER, PROPOSED BERM AREA, AND AREA WITHIN THE DETENTION BASIN LIMITS SHALL BE STABILIZED WITH CLASS I, TYPE A ORGANIC EROSION MATTING AND ALL DRAINAGE SWALES SHALL BE STABILIZED WITH CLASS II, TYPE C EROSION MATTING.
11. ALL INCIDENTAL MUD TRACKING OFF-SITE ONTO ADJACENT PUBLIC RIGHT-OF WAY (ROW) SHALL BE SWEEPED OR SCRAPPED WHEN VISIBLE THROUGH OUT THE WORKDAY. ALL SEDIMENT AND DEBRIS MUST BE REMOVED FROM THE ROW (STREET & GUTTERS) BY THE END OF EACH WORKING DAY USING PROPER DISPOSAL METHODS
12. PREVENT EXCESSIVE DUST FROM LEAVING THE CONSTRUCTION SITE IN ACCORDANCE WITH LOCAL AND STATE REGULATIONS.
13. INSTALL EROSION CONTROLS ON THE DOWNSTREAM SIDE OF STOCKPILES.
14. CONTOURS REPRESENT FINISH GRADE.
15. ALL DISTURBED AREAS SHALL RECEIVE A MINIMUM OF 6" OF TOPSOIL, SEED AND MULCH. SEED MIXTURE SHALL BE PER THE CITY OF MADISON REQUIREMENTS.
16. DEWATERING SHALL BE CONDUCTED PER WDNR STORM WATER MANAGEMENT TECHNICAL STANDARD 1061. DISCHARGE FROM DEWATERING MUST BE FREE OF SEDIMENT AND OUTLET TO STABILIZED AREA PRIOR TO OFFSITE RELEASE. DESIGN AND ANY APPLICABLE GROUNDWATER/SITE DEWATERING PERMITS REQUIRED ARE THE CONTRACTORS RESPONSIBILITY. INCIDENTAL TO BID ITEM 90007

PROJECT NO.	11066
CONTRACT NO.	9437
DESIGNED BY	GVP
DATE	11/12/2023 2:19 PM
REVISION	
BY	GP1

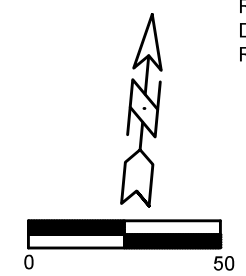
GRADING AND EROSION CONTROL PLAN - NE DETENTION AREA  
 EAST TOWNE DETENTION BASIN IMPROVEMENTS 1801 ZEIER RD, MADISON, WI  
 M:\DESIGN\Projects\11066\CAD\Sewers\11066 East Towne Detention Basin.dwg

11066  
 GP1



**EROSION CONTROL NOTES:**

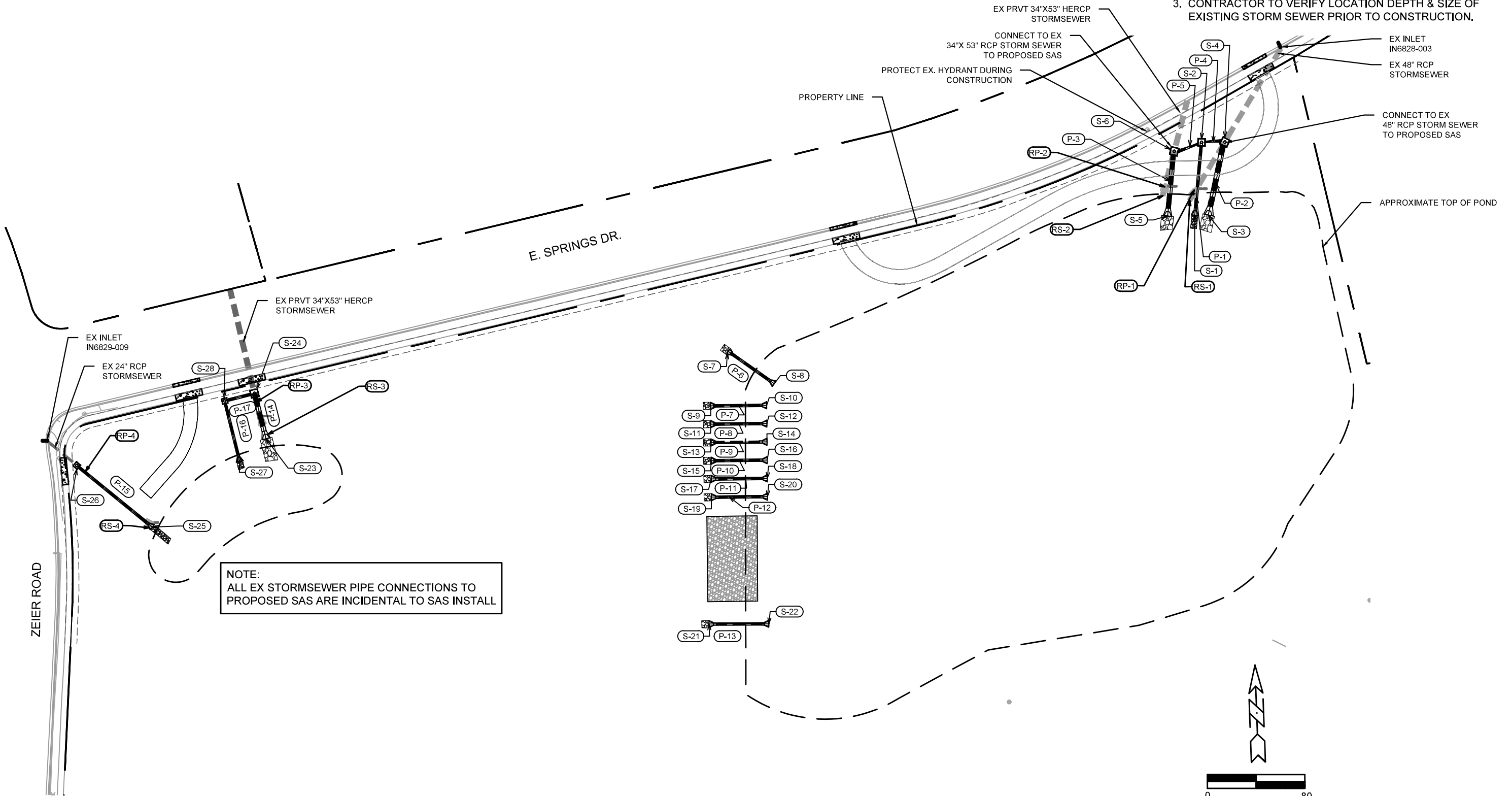
1. ALL EROSION CONTROL MEASURES SHALL BE CONSTRUCTED AND MAINTAINED BY THE CONTRACTOR IN ACCORDANCE WITH THE WISCONSIN DNR TECHNICAL STANDARDS AND CITY OF MADISON STANDARD SPECIFICATIONS.
2. INSTALL EROSION CONTROL MEASURES PRIOR TO ANY SITE WORK. MODIFICATIONS TO SEDIMENT CONTROL DESIGN MAY BE CONDUCTED TO MEET UNFORESEEN FIELD CONDITIONS. THE CONTRACTOR SHALL PLACE SILT SOCK OR SILT FENCE AT THE DIRECTION OF THE CONSTRUCTION ENGINEER.
3. EROSION CONTROL MEASURES INDICATED ON THE PLANS SHALL BE CONSIDERED MINIMUMS. IF DETERMINED NECESSARY DURING CONSTRUCTION ADDITIONAL MEASURES SHALL BE INSTALLED TO PREVENT SEDIMENT FROM LEAVING THE SITE.
4. INSPECT EROSION CONTROL MEASURES AFTER EACH 1/2" OR GREATER RAINFALL. REPAIR ANY DAMAGE OBSERVED DURING CONSTRUCTION.
5. CONTRACTOR SHALL REMOVE ALL EROSION CONTROL PRACTICES WHEN THE SITE IS RESTORED.
6. THE CONTRACTOR IS RESPONSIBLE FOR THE CONSTRUCTION AND MAINTENANCE OF ALL EROSION CONTROL MEASURES UNTIL FINAL ACCEPTANCE BY THE CITY OF MADISON
7. NO SITE GRADING OUTSIDE OF THE LIMITS OF DISTURBANCE
8. INSTALL INLET PROTECTION IN ALL STORM SEWER INLETS AND CATCH BASINS THAT MAY RECEIVE RUNOFF FROM DISTURBED AREAS
9. CUT AND FILL SLOPES SHALL BE NO GREATER THAN 3:1
10. ALL DISTURBED AREAS WITH A SLOPE OF 4:1 OR GREATER, PROPOSED BERM AREA, AND AREA WITHIN THE DETENTION BASIN LIMITS SHALL BE STABILIZED WITH CLASS I, TYPE A ORGANIC EROSION MATTING AND ALL DRAINAGE SWALES SHALL BE STABILIZED WITH CLASS II, TYPE C EROSION MATTING.
11. ALL INCIDENTAL MUD TRACKING OFF-SITE ONTO ADJACENT PUBLIC RIGHT-OF WAY (ROW) SHALL BE SWEEPED OR SCRAPPED WHEN VISIBLE THROUGH OUT THE WORKDAY. ALL SEDIMENT AND DEBRIS MUST BE REMOVED FROM THE ROW (STREET & GUTTERS) BY THE END OF EACH WORKING DAY USING PROPER DISPOSAL METHODS
12. PREVENT EXCESSIVE DUST FROM LEAVING THE CONSTRUCTION SITE IN ACCORDANCE WITH LOCAL AND STATE REGULATIONS.
13. INSTALL EROSION CONTROLS ON THE DOWNSTREAM SIDE OF STOCKPILES.
14. CONTOURS REPRESENT FINISH GRADE.
15. ALL DISTURBED AREAS SHALL RECEIVE A MINIMUM OF 6" OF TOPSOIL, SEED AND MULCH. SEED MIXTURE SHALL BE PER THE CITY OF MADISON REQUIREMENTS.
16. DEWATERING SHALL BE CONDUCTED PER WDNR STORM WATER MANAGEMENT TECHNICAL STANDARD 1061. DISCHARGE FROM DEWATERING MUST BE FREE OF SEDIMENT AND OUTLET TO STABILIZED AREA PRIOR TO OFFSITE RELEASE. DESIGN AND ANY APPLICABLE GROUNDWATER/SITE DEWATERING PERMITS REQUIRED ARE THE CONTRACTORS RESPONSIBILITY. INCIDENTAL TO BID ITEM 90007



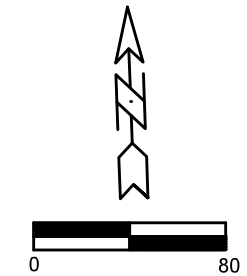
MARK	REVISION	DATE	BY						
Designed By: GVP	Date: 1/11/2023 2:19 PM								
11066	9437								
<b>GRADING AND EROSION CONTROL PLAN - NW WET STORAGE AREA</b> <b>EAST TOWNE DETENTION BASIN IMPROVEMENTS</b> <b>1801 ZEIER RD, MADISON, WI</b>									
M:\DESIGN\Projects\11066\CAD\Sewers\11066 East Town Detention Basin.dwg									
<b>11066</b> <b>GP 2</b>									

SITE UTILITY NOTES

1. ALL CONSTRUCTION & MATERIALS SHALL BE PER THE CITY OF MADISON STANDARD SPECIFICATIONS
2. THE LOCATION OF EXISTING UTILITIES SHOWN ON THE PLANS ARE APPROXIMATE. PROTECTION OF EXISTING UTILITIES IS THE CONTRACTOR'S RESPONSIBILITY.
3. CONTRACTOR TO VERIFY LOCATION DEPTH & SIZE OF EXISTING STORM SEWER PRIOR TO CONSTRUCTION.



NOTE:  
ALL EX STORMSEWER PIPE CONNECTIONS TO PROPOSED SAS ARE INCIDENTAL TO SAS INSTALL



DATE	BY
REVISION	
DESIGNED BY: GVP	Date: 1/11/2023 2:19 PM
MARK	11066
Scale:	U1

11066  
 EAST TOWNE DETENTION BASIN IMPROVEMENTS  
 1801 ZEIER RD, MADISON, WI  
 CONTRACT NO: 9437

UTILITY PLAN

11066  
 U1



# STORM SEWER SCHEDULE

EAST TOWNE POND  
 PROJECT NO. 11066  
 SHEET NO.  
 1 of 1  
 STORM SEWER SCHEDULE  
 CITY OF MADISON

### PROPOSED STORM STRUCTURES

STRUC NO.	LOCATION (NORTHING)	LOCATION (EASTING)	TYPE	TOP OF CASTING	EI.	DEPTH	NOTES
S-1	501419.39	844599.02	24" RCP APRON ENDWALL	-	859.50	-	W/GATE
S-2	501479.13	844604.54	5'x5' SAS	868.20	859.78	13.42 (Includes 5' Sump)	FP, W/R-1878-B7G (1)(2)
S-3	501419.50	844610.08	48" RCP APRON ENDWALL	-	859.50	-	W/GATE
S-4	501479.39	844623.68	6'x6' SAS	868.10	860.67	7.43	FP, W/R-1878-B7G (3)
S-5	501418.72	844576.64	42" RCP APRON ENDWALL	-	859.50	-	W/GATE
S-6	501471.82	844582.05	6'x6' SAS	868.10	860.89	7.21	FP, W/R-1878-B7G (4)
S-7	501307.54	844215.93	24" RCP APRON ENDWALL	-	859.00	-	
S-8	501281.05	844253.67	24" RCP APRON ENDWALL	-	860.00	-	
S-9	501262.86	844201.43	24" RCP APRON ENDWALL	-	859.00	-	
S-10	501263.35	844247.43	24" RCP APRON ENDWALL	-	860.00	-	
S-11	501247.86	844201.56	24" RCP APRON ENDWALL	-	859.00	-	
S-12	501248.35	844247.83	24" RCP APRON ENDWALL	-	860.00	-	
S-13	501232.86	844201.70	24" RCP APRON ENDWALL	-	859.00	-	
S-14	501233.35	844247.69	24" RCP APRON ENDWALL	-	860.00	-	
S-15	501217.86	844201.83	24" RCP APRON ENDWALL	-	859.00	-	
S-16	501218.35	844247.83	24" RCP APRON ENDWALL	-	860.00	-	
S-17	501202.94	844201.85	24" RCP APRON ENDWALL	-	859.00	-	
S-18	501203.35	844247.96	24" RCP APRON ENDWALL	-	860.00	-	
S-19	501187.94	844201.98	24" RCP APRON ENDWALL	-	859.00	-	
S-20	501188.35	844248.09	24" RCP APRON ENDWALL	-	860.00	-	
S-21	501083.80	844200.06	24" RCP APRON ENDWALL	-	859.00	-	
S-22	501084.03	844249.23	24" RCP APRON ENDWALL	-	860.00	-	
S-23	501235.90	843836.34	42" RCP APRON ENDWALL	-	857.00	-	W/GATE
S-24	501273.16	843826.76	6'x6' SAS	864.4	855.70	8.70	H/W/R-1878-B7G (5)
S-25	501163.33	843742.95	24" RCP APRON ENDWALL	-	857.00	-	W/GATE
S-26	501213.96	843680.84	4'x4' SAS	861.90	852.34	9.56 (Includes 5' Sump)	FP, W/R-1878-B7G (1)(2)
S-27	501217.19	843814.71	24" RCP APRON ENDWALL	-	854.00	-	W/GATE
S-28	501266.87	843802.31	4'x4' SAS	863.60	849.51	14.09 (Includes 5' Sump)	FP, W/R-1878-B7G (1)(2)(6)

### PROPOSED STORM PIPES

RPE NO.	FROM (DNSTM)	TO (UPSTM)	DISCH. EI.	INLET EI.	PLAN (PAY) LGTH (FT)	PIPE LGTH (FT)	SLOPE (%)	RPE SIZE	TYPE	NOTES
P-1	S-1	S-2	859.50	859.78	60	57	0.47%	24 IN RCP	TYPE 1	
P-2	S-3	S-4	859.50	862.12	61	59	4.27%	48 IN RCP	TYPE 1	
P-3	S-5	S-6	859.50	862.24	53	51	5.13%	42 IN RCP	TYPE 1	
P-4	S-2	S-4	860.57	860.67	19	13	0.52%	15 IN RCP	TYPE 1	
P-5	S-2	S-6	860.57	860.89	24	17	1.35%	15 IN RCP	TYPE 1	
P-6	S-7	S-8	859.00	860.00	46	46	2.17%	24 IN RCP	TYPE 1	
P-7	S-9	S-10	859.00	860.00	46	46	2.17%	24 IN RCP	TYPE 1	
P-8	S-11	S-12	859.00	860.00	46	46	2.17%	24 IN RCP	TYPE 1	
P-9	S-13	S-14	859.00	860.00	46	46	2.17%	24 IN RCP	TYPE 1	
P-10	S-15	S-16	859.00	860.00	46	46	2.17%	24 IN RCP	TYPE 1	
P-11	S-17	S-18	859.00	860.00	46	46	2.17%	24 IN RCP	TYPE 1	
P-12	S-19	S-20	859.00	860.00	46	46	2.17%	24 IN RCP	TYPE 1	
P-13	S-21	S-22	859.00	860.00	49	49	2.03%	24 IN RCP	TYPE 1	
P-14	S-23	S-24	857.00	857.7	39	36	1.82%	42 IN RCP	TYPE 1	
P-15	S-25	S-26	857.00	857.34	80	78	0.42%	24 IN RCP	TYPE 1	
P-16	S-27	S-28	854.00	854.51	51	49	1.00%	24 IN RCP	TYPE 1	
P-17	S-28	S-24	855.45	855.70	25	20	0.99%	24 IN RCP	TYPE 1	

### EXISTING STORM STRUCTURE REMOVALS

STRUC NO.	LOCATION (NORTHING)	LOCATION (EASTING)	TYPE	LENGTH (FT)	NOTES
RS-1	501431.43	844594.74	48" RCP APRON ENDWALL	8.00	REMOVAL PAID FOR UNDER PIPE REMOVAL
RS-2	501434.67	844572.59	34"X53" RCP APRON ENDWALL	8.00	REMOVAL PAID FOR UNDER PIPE REMOVAL
RS-3	501250.88	843833.34	34"X53" RCP APRON ENDWALL	8.00	REMOVAL PAID FOR UNDER PIPE REMOVAL
RS-4	501165.26	843741.08	24" RCP APRON ENDWALL	5.00	REMOVAL PAID FOR UNDER PIPE REMOVAL

### STORM PIPE REMOVALS


RPE REMOVE	REMOVE FRC	LENGTH (FT)	SIZE	TYPE
RP-1	END OF PIPE	60	48"	RCP
RP-2	END OF PIPE	41	34"X53"	RCP
RP-3	END OF PIPE	30	34"X53"	RCP
RP-4	END OF PIPE	77	24"	RCP

### SPECIFIC NOTES:

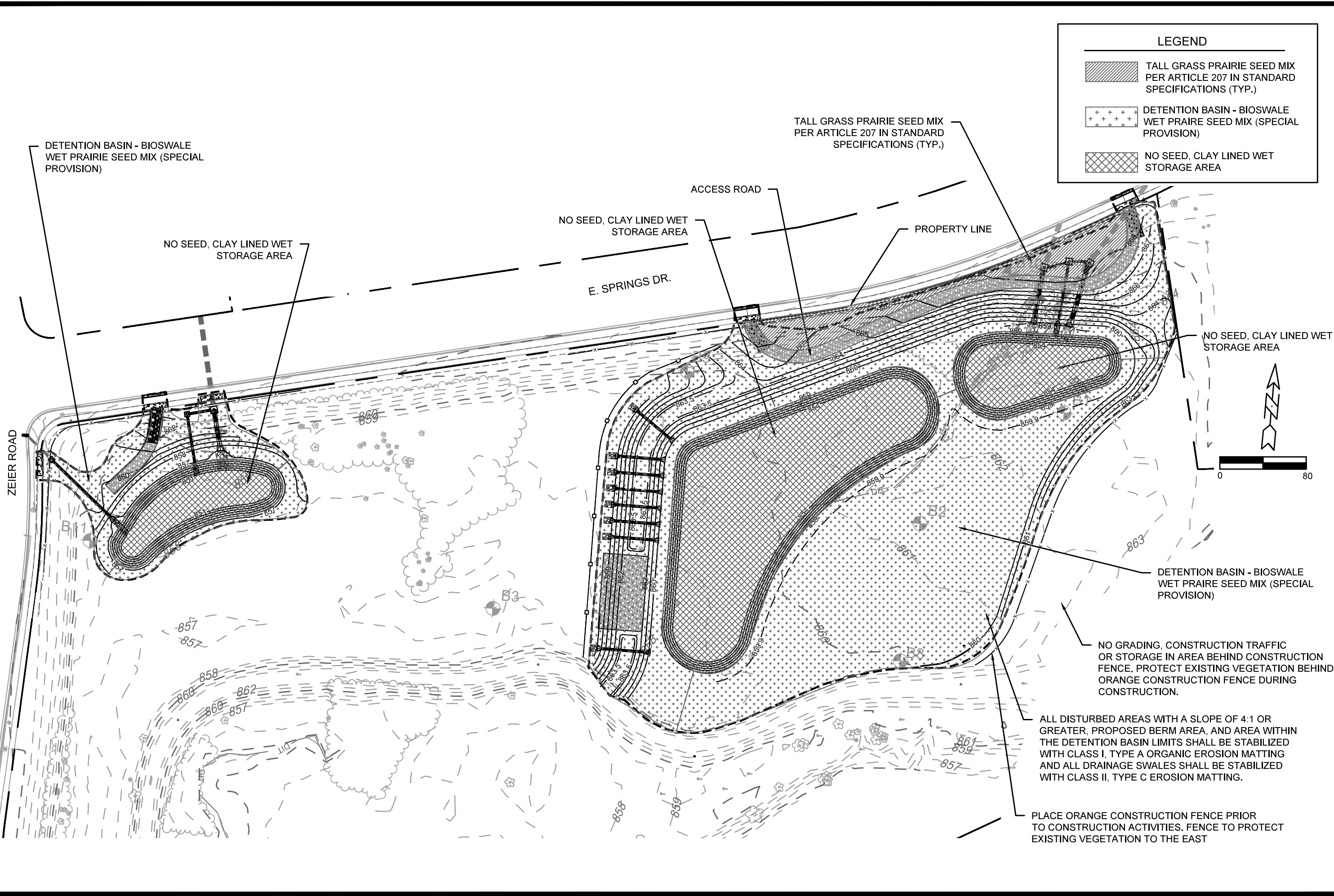
- (1) STRUCTURE INCLUDES 5' SUMP
- (2) STRUCTURE INCLUDES "SNOUT - 30' OIL AND DEBRIS STOP"
- (3) CONNECT TO EX 48" RCP; CONNECTION PAID AS INCIDENTAL TO S-4
- (4) CONNECT TO EX 34"X53" RCP; CONNECTION PAID AS INCIDENTAL TO S-6
- (5) CONNECT TO EX 34"X53" RCP; CONNECTION PAID AS INCIDENTAL TO S-24
- (6) CONNECT TO EX 24" RCP; CONNECTION PAID AS INCIDENTAL TO S-26



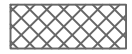
### STANDARD NOTES:


- PLAN LENGTH (PAY LENGTH) IS FROM CENTER OF STRUCTURE TO CENTER OF STRUCTURE. PIPE LENGTH IS ACTUAL LENGTH OF PIPE FROM STRUCTURE WALL TO STRUCTURE WALL. SLOPE CALCULATED USING PIPE LENGTH.
- ABBREVIATIONS: AE - APRON ENDWALL; RCP - REINFORCED CONCRETE PIPE; HERCP - HORIZONTAL ELLIPTICAL REINFORCED CONCRETE PIPE; DNA = DOES NOT APPLY; SAS = SEWER ACCESS STRUCTURE; LP = LOW POINT INLET STRUCTURE; FP = FIELD POURED STRUCTURE; TR = TOP OF CONCRETE ROOF; NCM = NO CROWN MATCH FOR PIPES; UD = UNDERDRAIN
- APPROXIMATE DISCHARGE EI. GIVEN, ADJUST EI. AND RPE SLOPE IN THE FIELD.
- TOP OF CASTING GRADE GIVEN IS THE TOP OF CURB FOR INLET STRUCTURES AND THE FLOWLINE OF THE CLOSED CASTING FOR SASs.
- ALL REINFORCED CONCRETE PIPES TO BE CLASS II UNLESS OTHERWISE NOTED.
- SURVEY OR TO CONFIRM THAT ALL INLET STATION / OFFSETS LINE UP WITH PROPOSED CURB AND GUTTER.
- ALL FIELD POURED SAS STORM STRUCTURES SHALL BE CONSTRUCTED IN ACCORDANCE WITH STANDARD DETAIL DRAWING 5.7.3.
- ALL PRECAST SAS STORM STRUCTURES SHALL BE CONSTRUCTED IN ACCORDANCE WITH STANDARD DETAIL DRAWING 5.7.5.
- ALL STRUCTURES CALLED OUT AS FIELD POURED SHALL BE FIELD POURED. ALL OTHER STRUCTURES (NOT INDICATED AS FIELD POURED) SHALL BE SUBMITTED TO QTY ENGINEERING FOR APPROVAL IF PRECAST STRUCTURES ARE PREFERRED. CONTACT GRANT POKOS OF QTY ENGINEERING AT GPOKOS@QTYOFMADISON.COM FOR PRECAST APPROVALS AND TO SEND SHOP DRAWINGS.

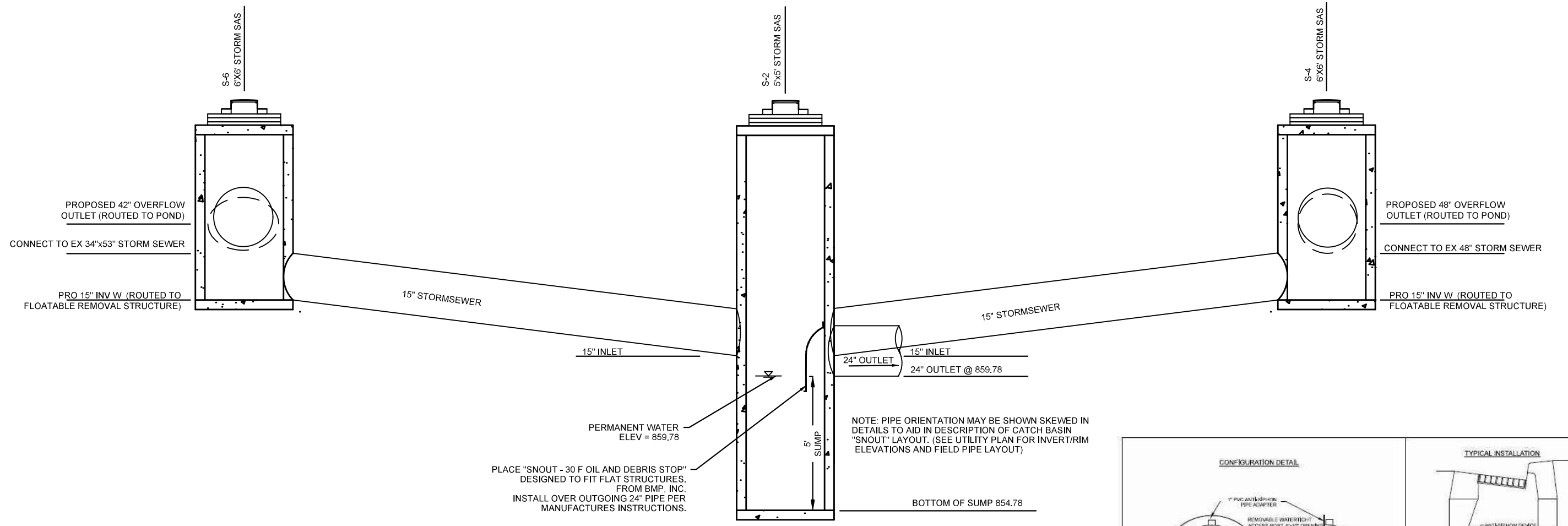
11066  
 STORM SEWER SCHEDULE  
 EAST TOWNE DETENTION BASIN IMPROVEMENTS  
 1801 ZEIER RD, MADISON, WI  
 CONTRACT NO: 9437  
 Scale: 1"=40'  
 Designed By: GVP  
 Date: 1/11/2023 2:19 PM  
 REVISION  
 11066  
 U1  
 U2  




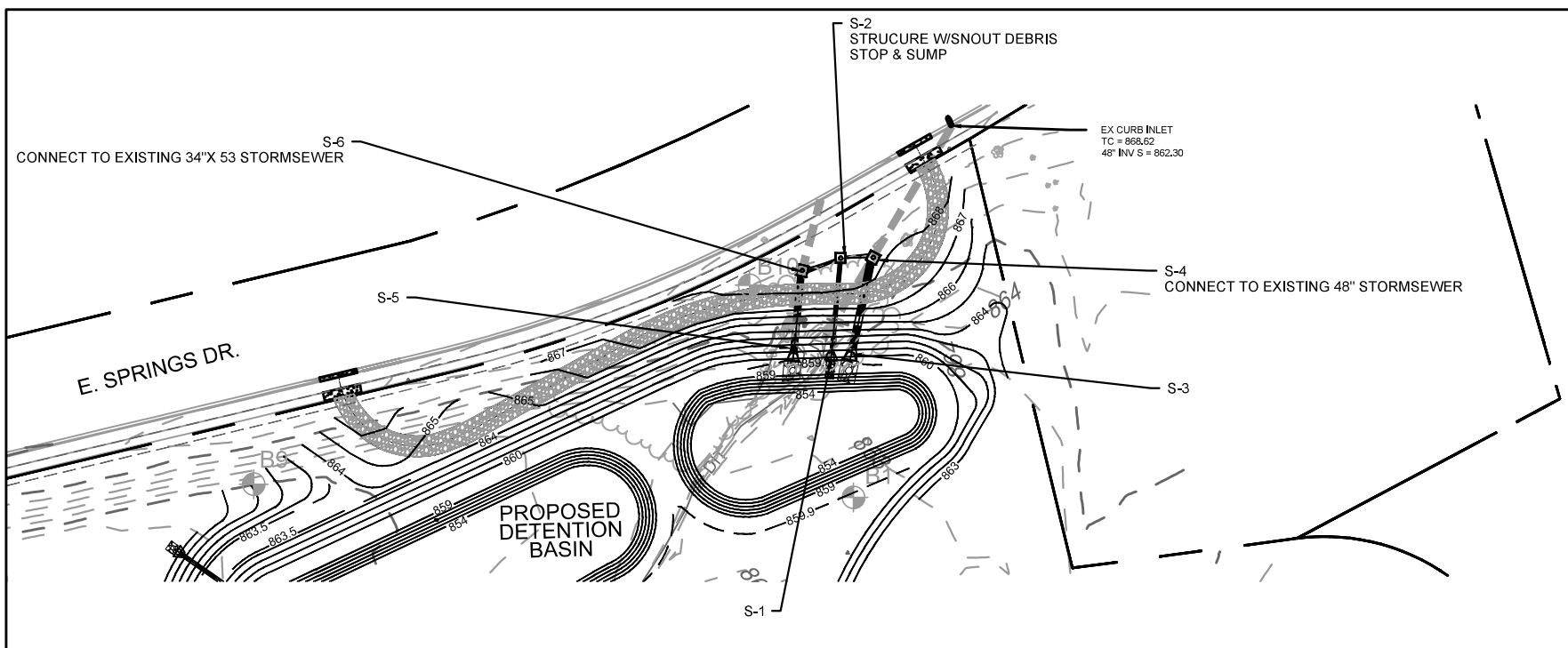


LEGEND	
	TALL GRASS PRAIRIE SEED MIX PER ARTICLE 207 IN STANDARD SPECIFICATIONS (TYP.)
	DETENTION BASIN - BIOSWALE WET PRAIRIE SEED MIX (SPECIAL PROVISION)
	NO SEED, CLAY LINED WET STORAGE AREA

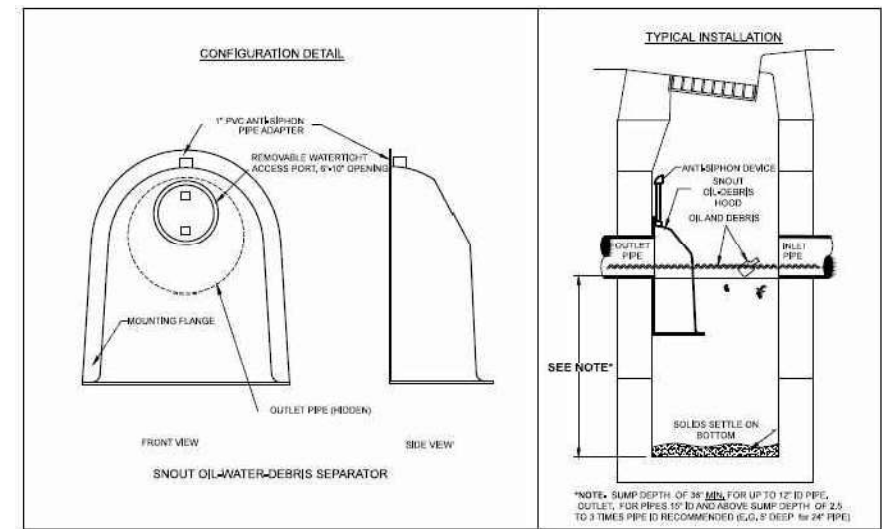
11066	11066	1801 ZEIER RD, MADISON, WI	9437
VEGETATION PLAN	EAST TOWNE DETENTION BASIN IMPROVEMENTS	CONTRACT NO:	
M:\DESIGN\Projects\11066\CAD\Sewers\11066 East Town Detention Basin.dwg			
			
11066		VP1	



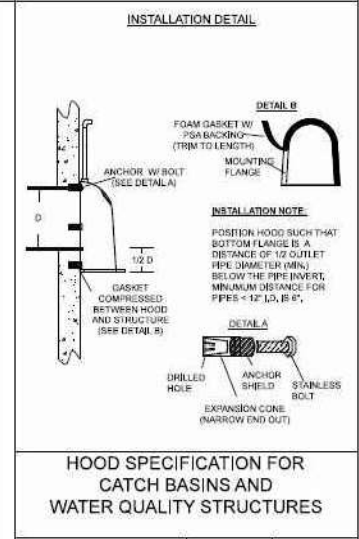
**PROFILE VIEW**  
**PROPOSED EAST TOWNE WET DETENTION BASIN -**  
**FLOATABLE REMOVAL SYSTEM (S2, S4, S6)**  
 NOT TO SCALE



**PLAN VIEW**  
**PROPOSED EAST TOWNE WET DETENTION BASIN - FLOATABLE REMOVAL SYSTEM**



- NOTES:**
- ALL HOODS AND TRAPS FOR CATCH BASINS AND WATER QUALITY STRUCTURES SHALL BE AS MANUFACTURED BY BEST MANAGEMENT PRODUCTS, INC., 9 MATHEWS DRIVE, UNIT A1-42, EAST HADDAM, CT 06423. TOLL FREE: (800) 504-8008 OR (888) 434-0277, FAX: (877) 434-3167. WEB SITE: www.bmpinc.com OR PRE-APPROVED EQUAL.
  - ALL HOODS SHALL BE CONSTRUCTED OF A GLASS REINFORCED RESIN COMPOSITE WITH ISG GEL COAT EXTERIOR FINISH WITH A MINIMUM 0.125" LAMINATE THICKNESS.
  - ALL HOODS SHALL BE EQUIPPED WITH A WATERTIGHT ACCESS PORT, A MOUNTING FLANGE, AND AN ANTI-SIPHON VENT PIPE AND ELBOW AS DRAWN. (SEE CONFIGURATION DETAIL).
  - THE SIZE AND POSITION OF THE HOOD SHALL BE DETERMINED BY OUTLET PIPE SIZE AS PER MANUFACTURER'S RECOMMENDATION. (SNOUT SIZE ALWAYS LARGER THAN PIPE SIZE).
  - THE BOTTOM OF THE HOOD SHALL EXTEND DOWNWARD A MINIMUM DISTANCE EQUAL TO 1/2 THE OUTLET PIPE DIAMETER WITH A MINIMUM DISTANCE OF 3" FOR PIPES <12" I.D.
  - THE ANTI-SIPHON VENT SHALL EXTEND ABOVE HOOD BY MINIMUM OF 3" AND A MAXIMUM OF 12" ACCORDING TO STRUCTURE CONFIGURATION.
  - THE SURFACE OF THE STRUCTURE WHERE THE HOOD IS MOUNTED SHALL BE FINISHED SMOOTH AND FREE OF LOOSE MATERIAL AND PIPE SHALL BE FINISHED FLUSH TO WALL.
  - ALL STRUCTURE JOINTS SHALL BE WATERTIGHT.
  - THE HOOD SHALL BE SECURELY ATTACHED TO STRUCTURE WALL WITH 1/2" STAINLESS STEEL BOLTS AND OIL-RESISTANT GASKET AS SUPPLIED BY MANUFACTURER. (SEE INSTALLATION DETAIL).
  - INSTALLATION INSTRUCTIONS SHALL BE FURNISHED WITH MANUFACTURER SUPPLIED INSTALLATION KIT. INSTALLATION KIT SHALL INCLUDE:
    - A. INSTALLATION INSTRUCTIONS
    - B. PVC ANTI-SIPHON VENT PIPE AND ADAPTER
    - C. OIL-RESISTANT CRUSHED CELL FOAM GASKET WITH PSA BACKING
    - D. 1/2" STAINLESS STEEL BOLTS
    - E. ANCHOR SHIELDS



**HOOD SPECIFICATION FOR**  
**CATCH BASINS AND**  
**WATER QUALITY STRUCTURES**

US Patent # 6126817, 7951294, 7857965, 8512556.  
 Canada Patent # 2285145, 2690156, 2690156 others pending.

DESCRIPTION	DATE	SCALE
OIL-DEBRIS HOOD SPECIFICATION AND INSTALLATION (TYPICAL)	09/08/18	NONE
	DRAWING NUMBER	SP-SN

EAST TOWNE DETENTION - NE DETENTION FLOATABLE REMOVAL SYSTEM      11066


EAST TOWNE DETENTION BASIN IMPROVEMENTS      1801 ZEIER RD, MADISON, WI

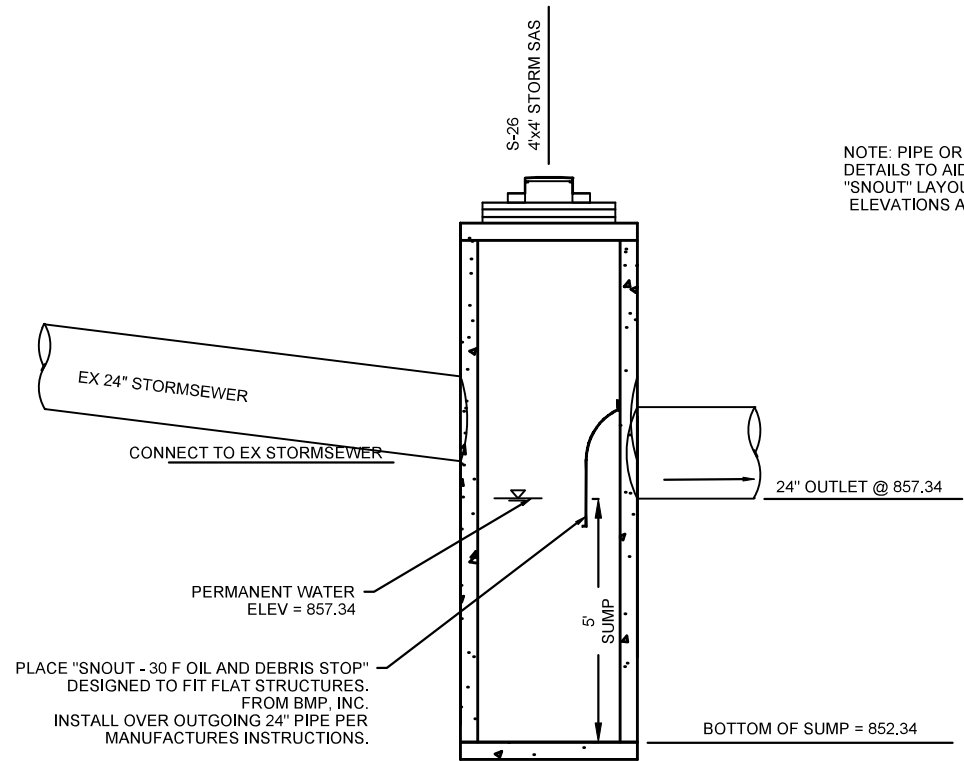
M:\DESIGN\Projects\11066\CAD\Sewers\11066 East Town Detention Basin.dwg

MARK	REVISION	DATE	BY

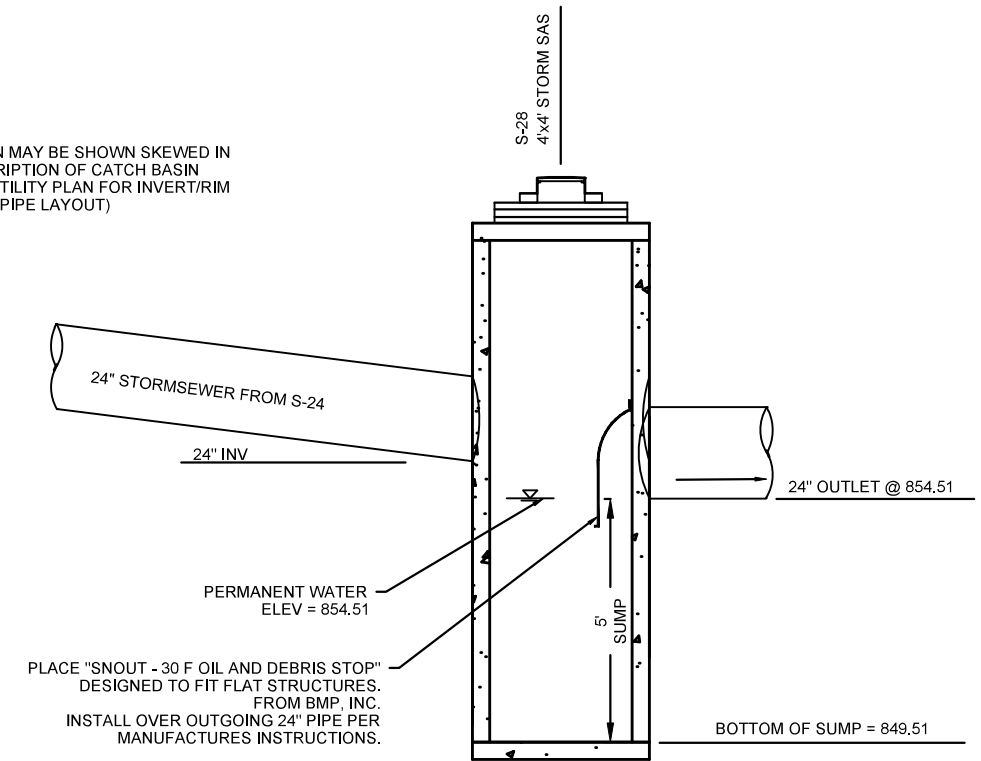
Designed By: \_\_\_\_\_      Date: 11/17/2023 2:20 PM      Scale: 1" = 100'

CONTRACT NO: \_\_\_\_\_      D1

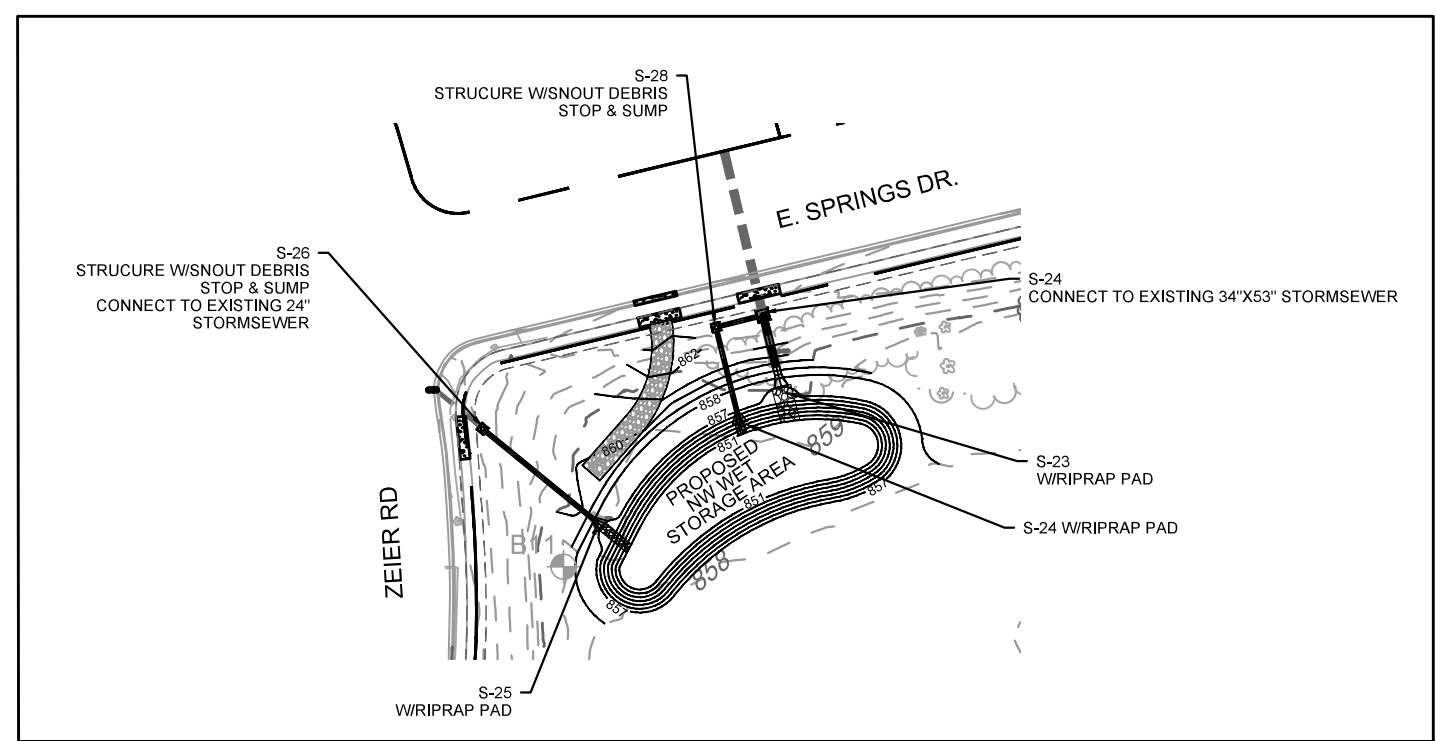
  
 11066  
 D1



**PROFILE VIEW**  
**PROPOSED EAST TOWNE NW FOREBAY -**  
**FLOATABLE REMOVAL SYSTEM (S26)**  
 NOT TO SCALE



**PROFILE VIEW**  
**PROPOSED EAST TOWNE NW FOREBAY -**  
**FLOATABLE REMOVAL SYSTEM (S28)**  
 NOT TO SCALE



**PLAN VIEW**  
**PROPOSED EAST TOWNE NW FOREBAY AREA - FLOATABLE REMOVAL SYSTEM**

NOTE: PIPE ORIENTATION MAY BE SHOWN SKEWED IN DETAILS TO AID IN DESCRIPTION OF CATCH BASIN "SNOOT" LAYOUT. (SEE UTILITY PLAN FOR INVERT/RIM ELEVATIONS AND FIELD PIPE LAYOUT)

**CONFIGURATION DETAIL**

**TYPICAL INSTALLATION**

**NOTES:**

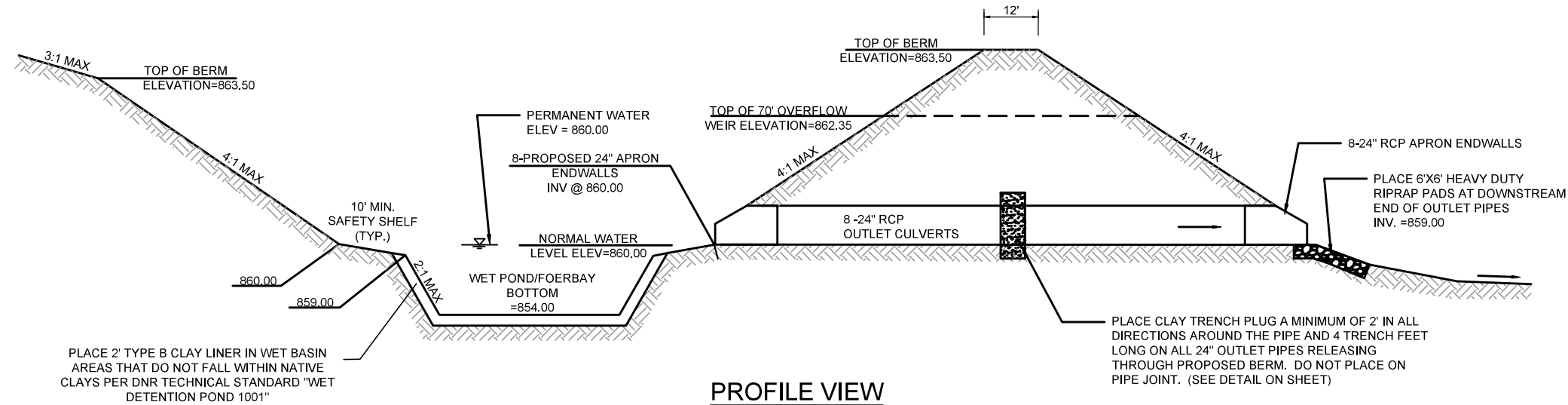
- ALL HOODS AND TRAPS FOR CATCH BASINS AND WATER QUALITY STRUCTURES SHALL BE AS MANUFACTURED BY BEST MANAGEMENT PRODUCTS, INC., 9 MATTHEWS DRIVE, UNIT A-402, EAST HADDAM, CT 06423. TOLL FREE: (800) 504-8008 OR (888) 434-0277, FAX: (877) 434-3107. WEB SITE: www.bmpinc.com OR PRE-APPROVED EQUAL.
- ALL HOODS SHALL BE CONSTRUCTED OF A GLASS REINFORCED RESIN COMPOSITE WITH ISO GEL COAT EXTERIOR FINISH WITH A MINIMUM 0.125\" LAMINATE THICKNESS.
- ALL HOODS SHALL BE EQUIPPED WITH A WATER-TIGHT ACCESS PORT, A MOUNTING FLANGE, AND AN ANTI-SIPHON VENT PIPE AND ELBOW AS DRAWN. (SEE CONFIGURATION DETAIL).
- THE SIZE AND POSITION OF THE HOOD SHALL BE DETERMINED BY OUTLET PIPE SIZE AS PER MANUFACTURER'S RECOMMENDATION (SNOOT SIZE ALWAYS LARGER THAN PIPE SIZE).
- THE BOTTOM OF THE HOOD SHALL EXTEND DOWNWARD A MINIMUM DISTANCE EQUAL TO 1/2 THE OUTLET PIPE DIAMETER WITH A MINIMUM DISTANCE OF 9\" FOR PIPES <12\" I.D.
- THE ANTI-SIPHON VENT SHALL EXTEND ABOVE HOOD BY MINIMUM OF 3\" AND A MAXIMUM OF 12\" ACCORDING TO STRUCTURE CONFIGURATION.
- THE SURFACE OF THE STRUCTURE WHERE THE HOOD IS MOUNTED SHALL BE FINISHED SMOOTH AND FREE OF LOOSE MATERIAL AND PIPE SHALL BE FINISHED FLUSH TO WALL.
- ALL STRUCTURE JOINTS SHALL BE WATER-TIGHT.
- THE HOOD SHALL BE SECURELY ATTACHED TO STRUCTURE WALL WITH 1/2\" STAINLESS STEEL BOLTS AND OIL-RESISTANT GASKET AS SUPPLIED BY MANUFACTURER. (SEE INSTALLATION DETAIL).
- INSTALLATION INSTRUCTIONS SHALL BE FURNISHED WITH MANUFACTURER SUPPLIED INSTALLATION KIT. INSTALLATION KIT SHALL INCLUDE:
  - INSTALLATION INSTRUCTIONS
  - PVC ANTI-SIPHON VENT PIPE AND ADAPTER
  - OIL-RESISTANT CRUSHED CELL FOAM GASKET WITH PSA BACKING
  - 304 STAINLESS STEEL BOLTS
  - ANCHOR SHIELDS

**INSTALLATION DETAIL**

**HOOD SPECIFICATION FOR CATCH BASINS AND WATER QUALITY STRUCTURES**

DESCRIPTION	DATE	SCALE
OIL-DEBRIS HOOD SPECIFICATION AND INSTALLATION (TYPICAL)	09/08/18	NONE
	DRAWING NUMBER SP-SN	

US Patent # 6126817, 7951284, 7857965, 8512556.  
 Canada Patent # 2285145, 2690156, 2690156 others pending.

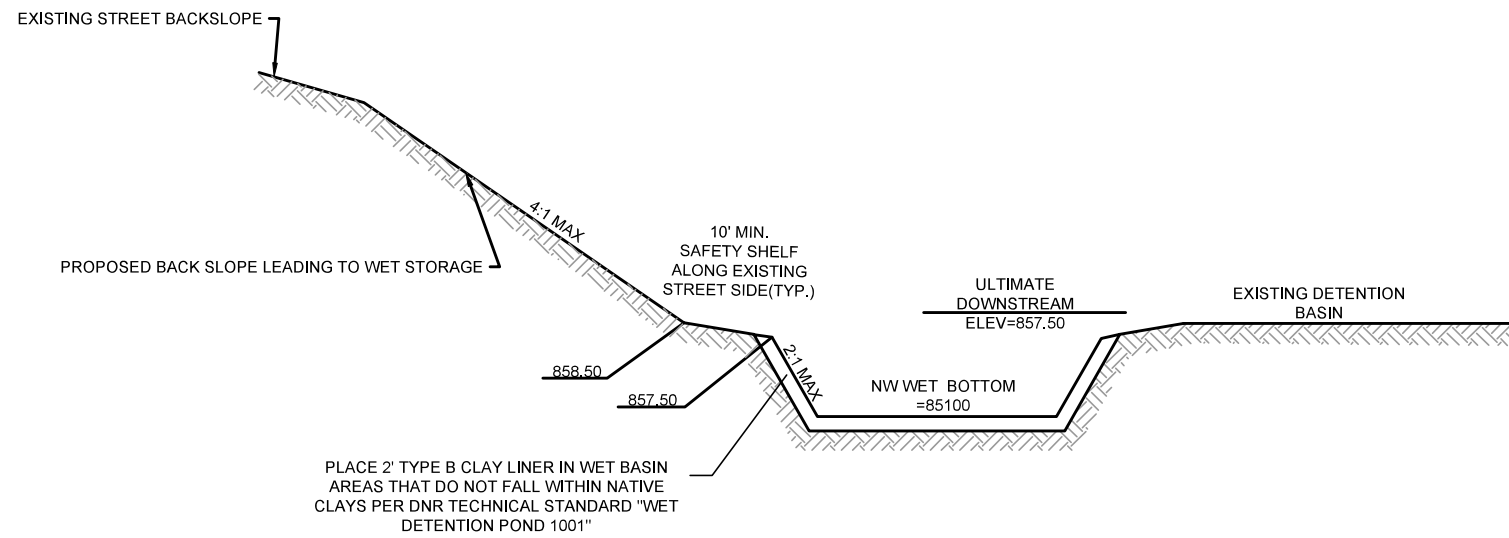


**PROFILE VIEW**

**PROPOSED EAST TOWNE NE WET DETENTION BASIN AREA**  
NOT TO SCALE

PLACE 2" TYPE B CLAY LINER IN WET BASIN AREAS THAT DO NOT FALL WITHIN NATIVE CLAYS PER DNR TECHNICAL STANDARD "WET DETENTION POND 1001"

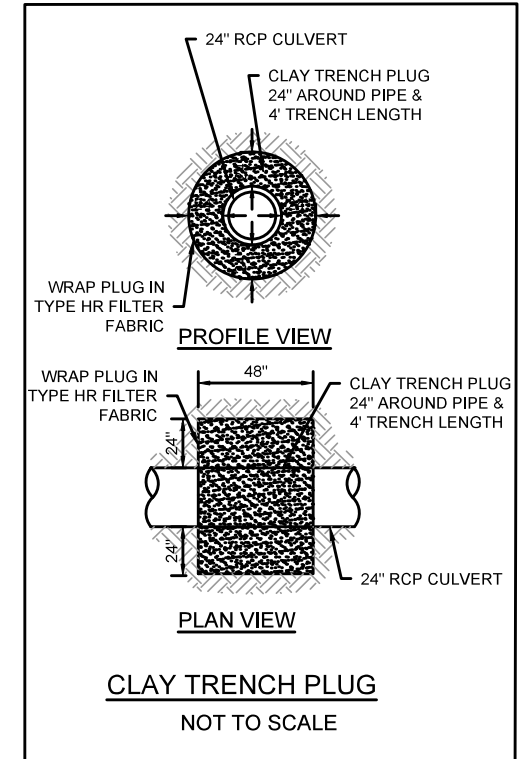
PLACE CLAY TRENCH PLUG A MINIMUM OF 2' IN ALL DIRECTIONS AROUND THE PIPE AND 4 TRENCH FEET LONG ON ALL 24" OUTLET PIPES RELEASING THROUGH PROPOSED BERM. DO NOT PLACE ON PIPE JOINT. (SEE DETAIL ON SHEET)



**PROFILE VIEW**

**PROPOSED EAST TOWNE NW WET STORAGE AREA**  
NOT TO SCALE

PLACE 2" TYPE B CLAY LINER IN WET BASIN AREAS THAT DO NOT FALL WITHIN NATIVE CLAYS PER DNR TECHNICAL STANDARD "WET DETENTION POND 1001"



**PROFILE VIEW**

**PLAN VIEW**

**CLAY TRENCH PLUG**  
NOT TO SCALE

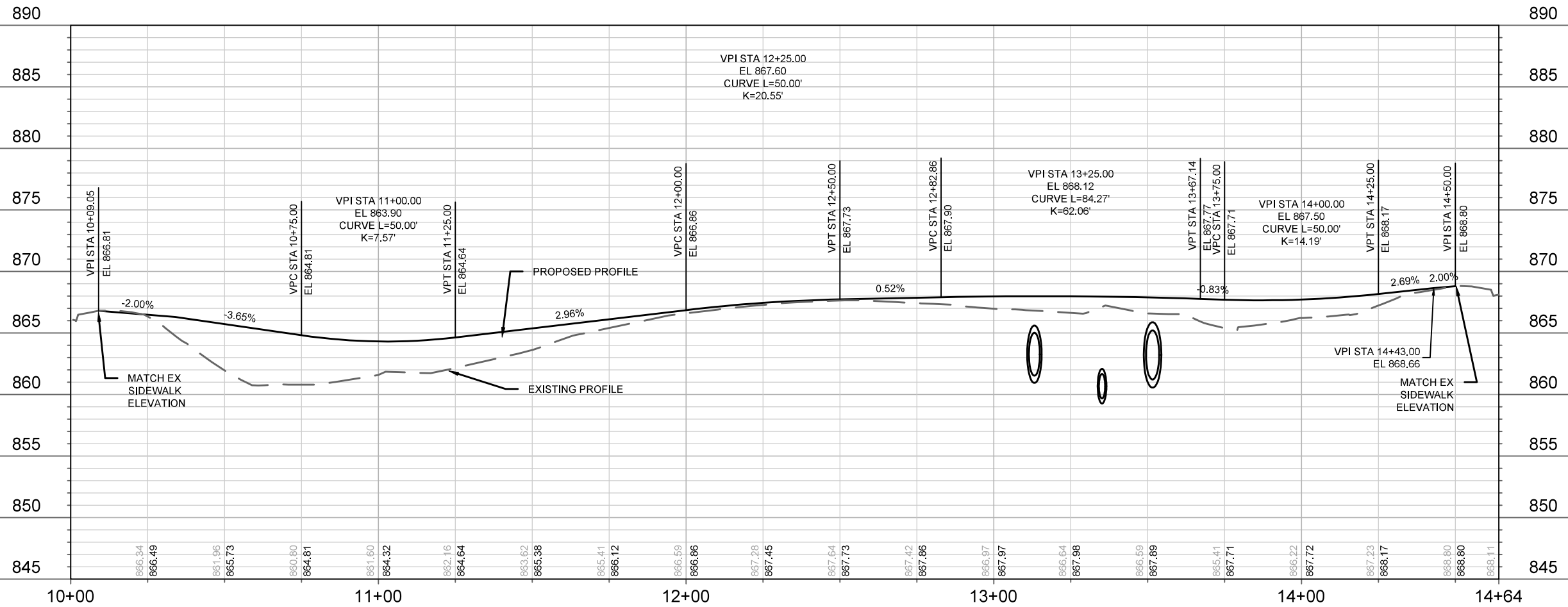
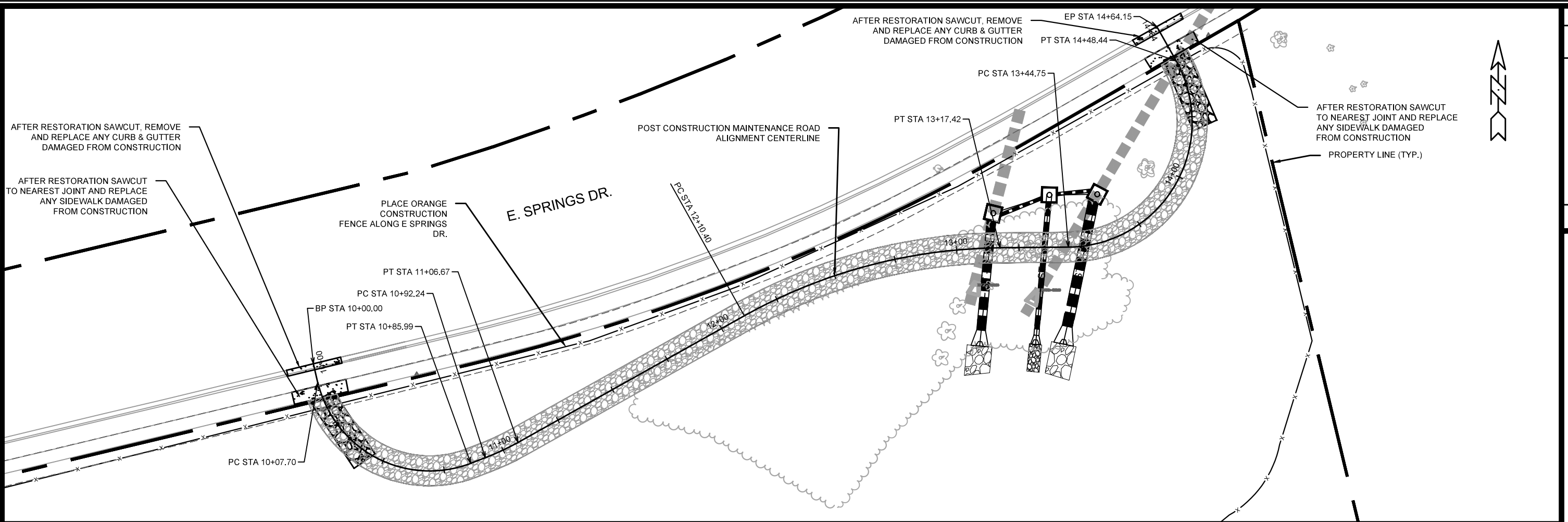
MARK	REVISION	DATE	BY

11066  
 1801 ZEIER RD, MADISON, WI  
 9437  
 CONTRACT NO:  
 M:\DESIGN\Projects\11066\CAD\Sewers\11066 East Town Detention Basin.dwg



11066  
 D3

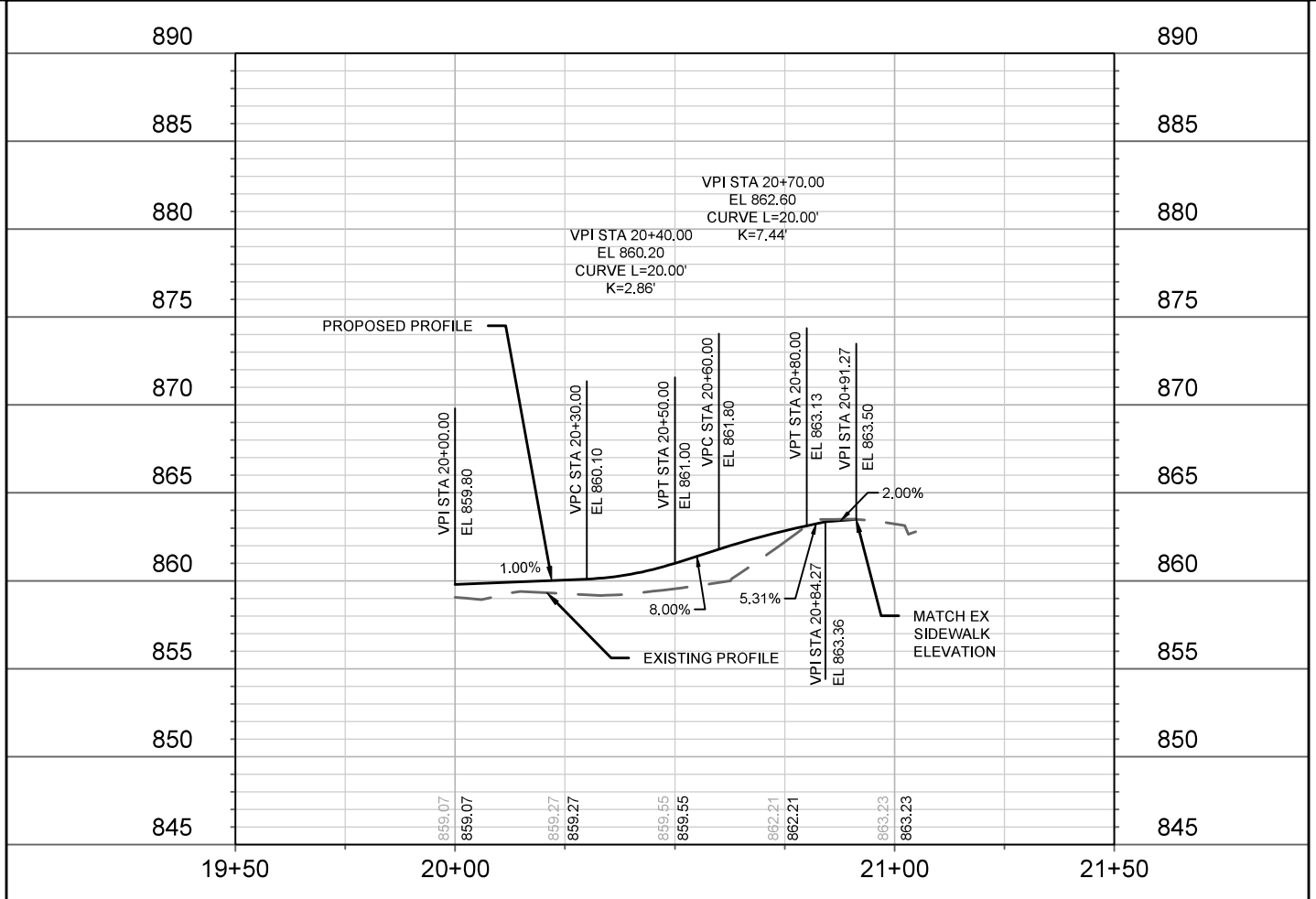
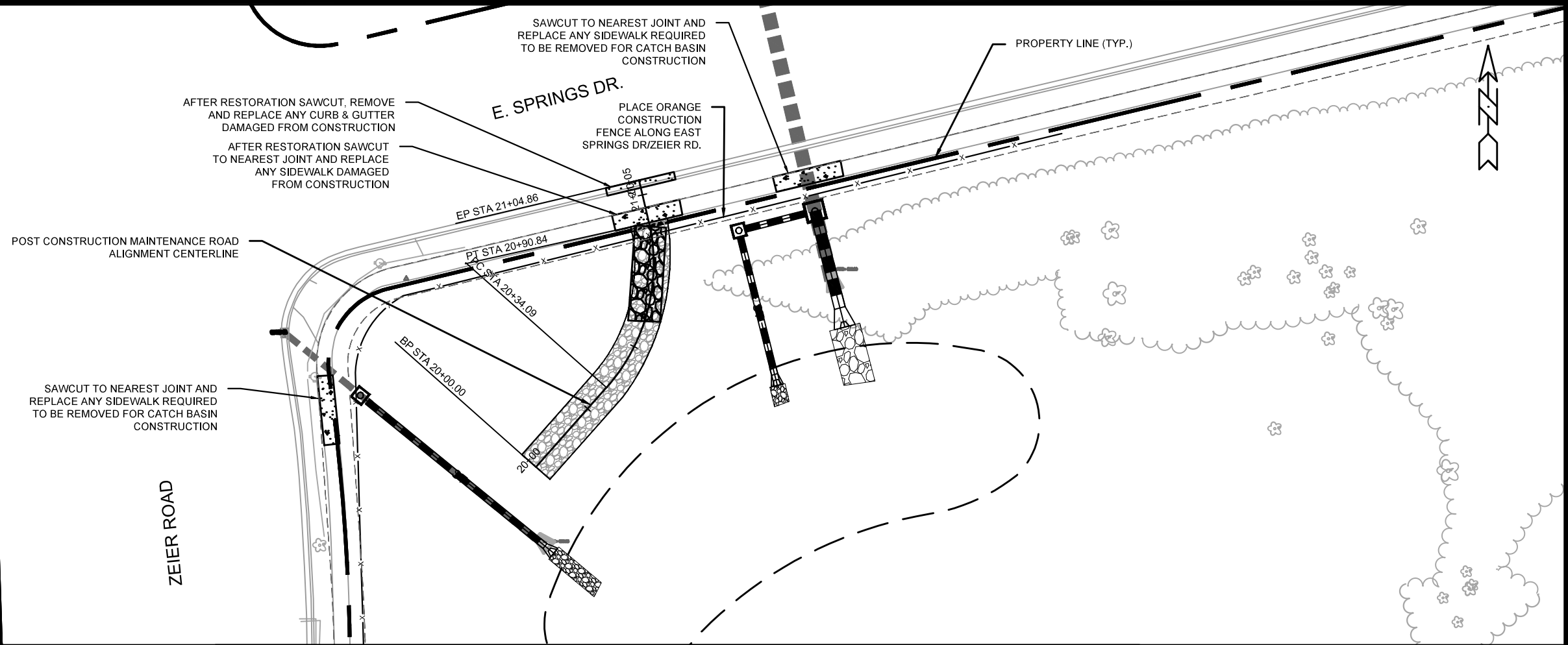




DATE	BY
REVISION	
DESIGNED BY: ##	11066
DATE: 1/11/2023 2:20 PM	
SCALE: 1" = 40'	
P1	

11066  
 NORTH EAST MAINTENANCE ACCESS ROAD PLAN AND PROFILE  
 EAST TOWNE DETENTION BASIN IMPROVEMENTS 1801 ZEIER ROAD, MADISON, WI  
 CONTRACT NO: 9437  
 M:\DESIGN\Projects\11066\CAD\Sewers\11066 East Town Detention Basin.dwg





MARK	REVISION	DATE	BY

Designed By: GVP  
 Date: 1/11/2023 2:20 PM  
 Scale: 1" = 40'  
 11066  
 P2

11066  
 NORTHWEST MAINTENANCE ACCESS ROAD PLAN AND PROFILE  
 EAST TOWNE DETENTION BASIN IMPROVEMENTS  
 1801 ZEIER RD, MADISON, WI  
 CONTRACT NO: 9437  
 M:\DESIGN\Projects\11066\CAD\sewers\11066 East Town Detention Basin.dwg



11066  
 P2

# 9437 East Towne Pond Plans

Final Audit Report


2023-01-12

Created:	2023-01-11
By:	ENG- Johanna Johnson (jjohnson@cityofmadison.com)
Status:	Signed
Transaction ID:	CBJCHBCAABAAlit3NDhcaTE7Gy5pynjicdfQ3VQGsx-


## "9437 East Towne Pond Plans" History

 Document created by ENG- Johanna Johnson (jjohnson@cityofmadison.com)

2023-01-11 - 9:39:28 PM GMT - IP address: 204.147.0.15

 Document emailed to ENG- Grant Pokos (gpokos@cityofmadison.com) for signature


2023-01-11 - 9:43:20 PM GMT

 Document emailed to ENG- Greg Fries (gfries@cityofmadison.com) for signature


2023-01-11 - 9:43:20 PM GMT

 Email viewed by ENG- Grant Pokos (gpokos@cityofmadison.com)


2023-01-11 - 9:44:25 PM GMT - IP address: 204.147.0.15

 Document e-signed by ENG- Grant Pokos (gpokos@cityofmadison.com)

Signature Date: 2023-01-11 - 9:44:52 PM GMT - Time Source: server- IP address: 204.147.0.15

 Email viewed by ENG- Greg Fries (gfries@cityofmadison.com)

2023-01-12 - 1:33:20 PM GMT - IP address: 68.115.75.98

 Document e-signed by ENG- Greg Fries (gfries@cityofmadison.com)

Signature Date: 2023-01-12 - 1:33:45 PM GMT - Time Source: server- IP address: 68.115.75.98

 Agreement completed.

2023-01-12 - 1:33:45 PM GMT